

PRESENTATION

DEPARTMENT OF HUMAN SERVICES

CHILD WELFARE PROGRAMS

INTERNATIONAL REUNIFICATION & ADOPTION PLACEMENT

PRACTICE, PROCESS, PROCEDURE

ANGELICA QUINTERO

MAY 7, 2016



TYPES OF PLACEMENT

- REUNIFICATION WITH A PARENT
- ADOPTION – ONLY WITH A RELATIVE AND WHEN OTHER COUNTRY IS SIGNATORY TO THE HAGUE CONVENTION ON THE PROTECTION OF CHILDREN AND COOPERATION IN RESPECT OF INTER-COUNTRY ADOPTION
- REPATRIATION – ASSISTING THE OTHER COUNTRY TO RETURN A CITIZEN OF THAT COUNTRY BACK TO THEIR COUNTRY OF ORIGIN
- DHS MAY NOT PLACE CHILDREN ABROAD FOR THE PURPOSE OF GUARDIANSHIP OR FOSTER CARE

DHS PLACEMENT ACTIVITY

REUNIFICATION:

2012 - **15** CHILDREN TO MEXICO

2013 - **33** CHILDREN TO MEXICO

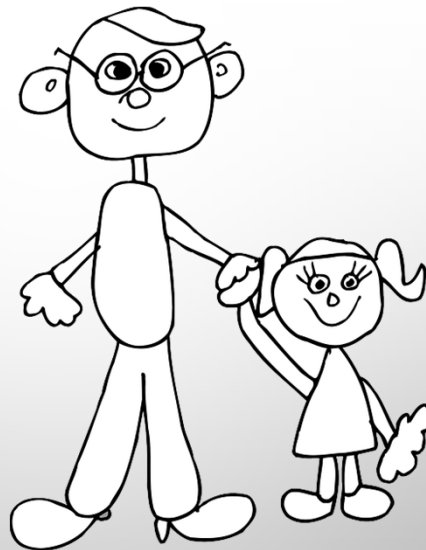
1 CHILD TO HONDURAS

2014 - **14** CHILDREN TO MEXICO

2015 - **8** CHILDREN TO MEXICO

INTERNATIONAL PARENTAL REUNIFICATION

THE RELATIONSHIP
BETWEEN A PARENT AND
THEIR CHILD IS
IMPORTANT



INTERNATIONAL PARENTAL REUNIFICATION

DHS PREPARES HOME STUDY REQUEST

REQUEST INCLUDES:

- ALL INFORMATION ABOUT THE CHILD
- ANY SAFETY CONCERNS THAT BROUGHT THE FAMILY TO DHS ATTENTION
- ANY SERVICES THE PARENT NEEDS TO ENGAGE IN RELATED TO ADJUDICATED ALLEGATIONS, OR THAT DIF DETERMINES TO BE NEEDED THROUGH THEIR ASSESSMENT
- INTERVIEWS OF THE PARENTS
- SUPPORTS/SERVICES THAT ARE AVAILABLE THROUGH THE EXTENDED FAMILY AND COMMUNITY

HOME STUDY REQUEST CONT'D

- DHS PROVIDES OTHER TRANSLATED DOCUMENTS SUCH AS A CHILD'S PSYCHOLOGICAL EVALUATION, MEDICAL HISTORY, CRIMINAL HISTORY OF THE PARENT IF THEY LIVED IN THE U.S, ETC.
- THE LOCAL DIF OFFICE IN MEXICO IS RESPONSIBLE FOR THE COMPLETION OF THE HOME STUDY WITHIN 90 DAYS FROM THE DATE THE REQUEST IS RECEIVED.

HOME STUDY TEMPLATE INCLUDES:

- MAKE UP OF THE FAMILY, WHO LIVES IN THE HOME
- LIFE EXPERIENCES/CHALLENGES
- MARRIAGE AND SIGNIFICANT RELATIONSHIPS
- EDUCATION, EMPLOYMENT AND FINANCIAL STABILITY
- PLAN FOR CHILD CARE IF NEEDED
- SUPPORT SYSTEM AND LIFE STYLE
- PARENT ATTITUDE/BEHAVIOR WORKING WITH DIF
- HOME SETTING – PHYSICAL SETTING, SIZE, HOUSE KEEPING STANDARDS, PUBLIC SERVICES AVAILABLE
- MEDICAL HEALTH AND MENTAL HEALTH
- USE OF ALCOHOL, TOBACCO AND/DRUGS
- HOW PARENT WILL HELP CHILD INTEGRATE TO THE COUNTRY

HOME STUDY TEMPLATE CONT'D

- USE OF COMMUNITY RESOURCES, RECREATIONAL ACTIVITIES AVAILABLE FOR CHILD/FAMILY
- PARENTING SKILLS AND VALUES
- PROTECTIVE CAPACITY ASSESSMENT
- RESULTS OF CRIMINAL HISTORY AND CHILD ABUSE HISTORY FOR ALL ADULTS LIVING IN THE HOME
- ASSESSMENT AND RECOMMENDATIONS
- **THE FINAL HOME STUDY MUST RECOMMEND PLACEMENT**

WHILE WE WAIT FOR HOME STUDY

THE EXPECTATION IS THAT THE BRANCH DEVELOP A PLAN TO ENHANCE THE RELATIONSHIP BETWEEN CHILD & PARENT LIVING ABROAD:

- PHONE/SKYPE/LETTERS/PICTURES/FACE TIME
- INCLUDE PARENTS IN CHILD'S ACTIVITIES: SCHOOL CONFERENCES, IEP MEETINGS, COMMUNICATION WITH SERVICE PROVIDERS FOR CHILD
- MAKE SURE PARENT IS PARTICIPATING IN CASE PLAN, HEARINGS, CRB'S, AND OTHER SERVICES
- PROVIDE WRITTEN CASE PLAN, COURT ORDERS, ACTION AGREEMENT TO PARENT IN PRIMARY LANGUAGE

OTHER SERVICES TO CONSIDER

- CAN PARENT ATTEND ESL CLASSES
- LANGUAGE CLASSES FOR CHILD IF NOT PLACED IN A CULTURALLY APPROPRIATE HOME, OTHER RESOURCES
- WHAT/HOW CAN PARENT EDUCATE SELF ABOUT THE NEEDS OF CHILD? (BEGIN TO IDENTIFY MEDICAL/DENTAL/ MENTAL HEALTH PROVIDERS
- HAVE PARENT RESEARCH SCHOOLS IN COMMUNITY THAT CHILD WILL ATTEND
- HAVE PARENT RESEARCH COMMUNITY ACTIVITIES THE FAMILY/CHILD CAN PARTICIPATE IN
- INFORM CHILD ABOUT AREA WHERE PARENT LIVES

HOME STUDY APPROVAL

IF PLACEMENT IS DENIED, THE DEPARTMENT MAY SEEK A RECOMMENDATION FROM DIF REGARDING THE ABILITY TO MITIGATE CONCERNS OR ISSUES

IF PLACEMENT IS RECOMMENDED:

- DO WE BELIEVE THE HOME STUDY IS COMPLETE? IS INFORMATION NEEDED?
- DO WE NEED TO REQUEST AN ADDENDUM THROUGH THE CONSULATE, AND COMMUNICATE WITH SOCIAL WORKER IN MEXICO, KEEPING PARENT & CONSULATE INFORMED?
- DO WE NEED TO SET UP A PHONE CONFERENCE WITH PARENT AND DIF?
- DO WE NEED FURTHER INTERVIEWS WITH THE PARENT OR OTHERS?
- DOES THE STUDY RECOMMEND PLACEMENT WITH CONDITIONS? SUCH AS THAT THE PARENT PARTICIPATE/ENGAGE IN COUNSELING/PARENTING

HOME STUDY APPROVAL CONT'D



ONCE AN APPROVED HOME STUDY IS RECEIVED, CONSULTATION BETWEEN THE BRANCH AND CENTRAL OFFICE BECOMES CRITICAL AS THE CHILD WELFARE DIRECTOR GIVES THE FINAL APPROVAL TO RECOMMEND INTERNATIONAL REUNIFICATION TO THE COURT

IT IS CRITICAL THAT THE COURT BE INFORMED OF THE PROGRESS OF THE REUNIFICATION PLAN FROM START TO FINISH SO ANY CONCERNS CAN BE ADDRESSED ALONG THE WAY

THE FINAL STEP IS FOR JUDICIAL APPROVAL AND AN ORDER THAT THE CHILD MAY BE PLACED OUT OF COUNTRY

CHILD'S WELL BEING THROUGHOUT THE LIFE OF THE CASE

CASES INVOLVING INTERNATIONAL ISSUES ARE COMPLEX, THUS COMMUNICATION IS VERY IMPORTANT

- IMPORTANCE OF COMMUNICATION WITH PARENT(S)
- COMMUNICATION WITH DIF SOCIAL WORKER
- WORKING WITH CHILD'S THERAPIST AND COMMUNICATION WITH PARENT AND THERAPIST IN THE OTHER COUNTRY CHILD WILL HAVE
- PROVIDE WRITTEN INFORMATION TO THE PARENT AND DIF REGARDING CHILD'S HEALTH, SCHOOL PROGRESS & SERVICES

BEFORE TRAVELING

- DEVELOP TRANSITION PLAN AND OBTAIN THE CHILD'S PASSPORT (THIS SHOULD ALREADY BE IN PROGRESS SO THERE ARE NO FURTHER DELAYS)
- TRAVEL PAPERWORK: WHO IS TRAVELING, LENGTH OF TRIP, ACCOMMODATIONS, MODE OF TRANSPORTATION WHILE IN MEXICO, SAFETY IN AREA TRAVELING TO, ARRANGEMENTS WITH DIF/PARENTS/SRE, TRAVEL APPROVALS, ASSESS WHAT ITEMS CHILD IS TAKING AND WHOM THEY NEED TO SAY GOOD BYE TO
- GET COURT ORDER ALLOWING INTERNATIONAL TRAVEL & PLACEMENT WITH PARENT
- OBTAIN APOSTILLE THROUGH SECRETARY OF STATE OFFICE ON COURT ORDER AND BIRTH CERTIFICATE AND GET COURT ORDER TRANSLATED

INFORMATION PROVIDED TO PARENT AT TIME OF PLACEMENT

- CHILD'S ORIGINAL BIRTH CERTIFICATE WITH APOSTILLE
- CHILD'S PASSPORT
- IMMUNIZATION CARDS/RECORD
- SOCIAL SECURITY CARD FOR CHILD
- SCHOOL TRANSCRIPT WITH APOSTILLE, RECORDS
- INFO ABOUT NEAREST AMERICAN EMBASSY
- SUMMARY OF CHILD'S MEDICAL/DENTAL/MENTAL AND DEVELOPMENTAL/EDUCATIONAL NEEDS

QA1
QA2

CONT'D

- LIST OF MEDICAL/DENTAL/MENTAL HEALTH PROVIDER ADDRESSES FOR RECORDS TO BE REQUESTED
- LETTER ADDRESSED TO PARENT THAT STATES JURISDICTION AND CUSTODY WILL END DAY OF PLACEMENT
- COURT ORDER ALLOWING DHS TO PLACE CHILD WITH THE PARENT, AND CHILD HAD PERMISSION TO TRAVEL
- OFFICIAL DOCUMENT IS SIGNED BY PARENT, DHS STAFF, DIF STAFF, AND SRE STAFF TO CONFIRM CHILD ENTERED MEXICO AND TRANSITIONED TO PARENT
- DHS STAFF RETURN, ENTER CASE NOTE, REQUEST DISMISSAL, NOTIFY MC OFFICE, AND CLOSE CASE

Slide 16

QA1 **DRAFT**
QUINTERO Angelica, 1/22/2016

QA2 **Draft**
QUINTERO Angelica, 1/22/2016

CHALLENGES WITH REUNIFICATION

- LANGUAGE BARRIER
- EXCHANGE OF DOCUMENTS BETWEEN THE TWO COUNTRIES
- CHANGE IN STAFF IN THE TWO COUNTRIES
- BELIEFS, VALUES OR PERSONAL BIASES
- LENGTH OF TIME IT TAKES TO ACHIEVE REUNIFICATION VS ASFA
- SERVICES AVAILABLE & ACCESSIBILITY
- OTHER CHALLENGES PRESENT IN EACH CASE

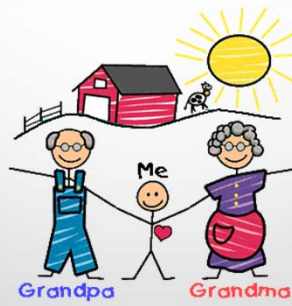
REUNIFICATION PICTURES



FAMILY & CULTURAL
PRESERVATION IS
IMPORTANT



INTERNATIONAL ADOPTION



ADOPTION PLACEMENTS TO MEXICO

23 CHILDREN HAVE BEEN PLACED SINCE 2009
8 CHILDREN ARE CURRENTLY PENDING PLACEMENT

INTERNATIONAL ADOPTION

- U.S. STATE DEPT. IS CENTRAL AUTHORITY FOR THE U.S.
- U.S STATE DEPT. DELEGATES THIS AUTHORITY TO DHS
- SECRETARIA DE RELACIONES EXTERIORES (SRE) IS CENTRAL AUTHORITY FOR MEXICO
- SRE DELEGATES INTERNATIONAL ADOPTIONS TO **DIF STATE OFFICE (THERE ARE 32 STATES IN MEXICO)**
- **HAGUE CONVENTION** - AN INTERNATIONAL TREATY THAT TOOK PLACE IN HAGUE, NETHERLANDS IN MAY 29, 1993. REINFORCES THE U.N. RIGHTS OF THE CHILD.

INTERNATIONAL ADOPTION CONT'D

- **SIGNATORY/RATIFIED COUNTRIES** - ARE TO COMPLY WITH REQUIREMENTS TO PREVENT CHILD ABDUCTION, TRAFFICKING AND ENSURE SAFETY OF FOREIGN CHILDREN AND PROTECTION OF FAMILIES. OREGON WILL ONLY CONDUCT INTERNATIONAL ADOPTIONS IN COUNTRIES WHO ARE SIGNATORIES TO HAGUE. **U.S. SIGNED AND RATIFIED IN APRIL 2008**
- **RELATIVE ADOPTIONS FOR U.S CITIZENS IN THE MILITARY ABROAD OR WORKING FOR THE U.S GOVERNMENT ABROAD ARE CONSIDERED DOMESTIC ADOPTIONS AND DO NOT COME UNDER THE HAGUE CONVENTION.** CORE REQUIREMENTS ARE THE SAME, HOME STUDY, CENTRAL OFFICE ADOPTION SELECTION COMMITTEE, SUPERVISION AGREEMENT, QUARTERLY REPORTS, & TRAINING.

ADOPTION HOME STUDY REQUEST

- DHS PREPARES LETTER REQUESTING RELATIVE ADOPTION HOME STUDY
- THE REQUEST PROVIDES SIMILAR INFORMATION AS IN REQUEST FOR PARENTAL HOME STUDY – WITH FOCUS ON ADOPTION PLANNING
- DHS SENDS LETTER TO CONSULATE OFFICE
- CONSULATE FORWARDS TO CENTRAL AUTHORITY
- CENTRAL AUTHORITY FORWARDS TO DIF (DESARROLLO INTEGRAL DE LA FAMILIA) STATE OFFICE
- DIF STATES REQUIRES A MINIMUM OF 90 DAYS TO COMPLETE
- DIF REQUIRES A PSYCHOLOGICAL EVALUATION A DRUG & ALCOHOL SCREENING

HOME STUDY INFORMATION

- FAMILY PROFILE
 - HOME AND HOUSEHOLD PRACTICES
 - EMPLOYMENT/RESOURCES, FINANCIAL STABILITY
 - SOCIAL ENVIRONMENT, SOURCES OF SOCIAL SUPPORT
 - MEDICAL HISTORY AND HEALTH PRACTICES
 - PERSONAL QUALIFICATIONS/MENTAL HEALTH
 - REASONS/MOTIVATION TO ADOPT
 - WHO WILL PARENT IF ADOPTIVE RESOURCES BECOMES UNAVAILABLE

HOME STUDY INFORMATION CONT'D

- PARENTING SKILLS
 - FAMILY UNITY/EMOTIONAL, HOME ATMOSPHERE
 - USE OF COMMUNITY RESOURCES
 - RELATIONSHIP WITH SOCIAL AGENCIES
 - DRUG/ALCOHOL USE
 - REFERENCES
 - SAFETY ISSUES, CHILD WELFARE AND CRIMINAL HISTORY CHECKS
 - DIF HAS COMMITTEE TO DETERMINE IF FAMILY IS SUITABLE,
 - **DIF MUST RECOMMEND THE FAMILY TO ADOPT**

ADOPTION TRAINING

- PROSPECTIVE ADOPTIVE PARENTS MUST RECEIVE A MINIMUM OF 10 HOURS OF TRAINING RELATED TO THE FOLLOWING TOPICS:
 - EFFECTS OF ABUSE (PHYSICAL, EMOTIONAL, SEXUAL) AND NEGLECT ON CHILDREN.
 - EFFECTS OF DRUGS AND ALCOHOL ON CHILDREN.
 - EFFECTS OF MOVES AND TRANSITION ON CHILDREN.
 - SIGNIFICANCE OF BIRTH FAMILY, INCLUDING GRIEF AND LOSS ISSUES
 - OPENNESS IN ADOPTION.
 - ATTACHMENT PROCESS AND ATTACHMENT DIFFICULTIES.
 - POSITIVE BEHAVIOR MANAGEMENT.

HOME STUDY APPROVAL

IF PLACEMENT IS DENIED, THE DEPARTMENT MAY SEEK A RECOMMENDATION FROM DIF REGARDING THE ABILITY TO MITIGATE CONCERNS OR ISSUES

IF PLACEMENT IS BEING RECOMMENDED BY DIF

- DO WE BELIEVE THE HOME STUDY IS COMPLETE? CAN WE MOVE FORWARD OR IS MORE INFORMATION NEEDED?
- CONFIRMATION TRAINING COMPLETED
- DO WE NEED TO REQUEST AN ADDENDUM THROUGH THE CONSULATE, AND COMMUNICATE WITH SOCIAL WORKER IN MEXICO, KEEPING CONSULATE INFORMED?
- ARE THERE CONDITIONS TO THE RECOMMENDATION TO PLACE?

BEFORE PLACEMENT CAN BE MADE



- AN INTER-COUNTRY SUPERVISION AGREEMENT IS DEVELOPED AND SIGNED BETWEEN THE TWO COUNTRIES
- CHILD MUST BE LEGALLY FREE
- ADOPTION ASSISTANCE NEEDS TO BE IN PLACE
- MEDICAL COVERAGE FOR CHILD MUST BE IDENTIFIED
- AAG ASSISTS WITH OBTAINING CORRECT ORDERS FOR TRAVEL, PLACEMENT, BEST INTEREST FINDINGS, AND HAGUE DECLARATION

FINALIZATION REQUIREMENTS

- ADOPTIVE FAMILY COMPLETES A MINIMUM OF 10 HOURS OF TRAINING - RECEIVING COUNTRY DECIDES HOW TO PROVIDE THE TRAINING
- COLLATERAL CONTACT FORM, LETTERS SENT TO MEXICO WITH AGENCY TOLL FREE NUMBER
- MONTHLY SUPERVISION IS REQUIRED FOR AT LEAST SIX MONTHS AND QUARTERLY REPORTS ARE REQUIRED
- CHILD STILL IN DHS CUSTODY AND WARD OF THE COURT - IMPORTANT TO STAY IN CONTACT WITH CHILD, FAMILY, & SOCIAL SERVICE AGENCY SUPERVISING THE PLACEMENT
- APPLICATION FOR HAGUE CERTIFICATE OF ADOPTION THROUGH THE U.S. STATE DEPARTMENT WHEN ADOPTION IS FINAL
- FOR MORE INFORMATION SEE:
[HTTP://ADOPTION.STATE.GOV/HAGUE/OVERVIEW/TEXT.HTML](http://adoption.state.gov/hague/overview/text.html)

CHALLENGES WITH INTERNATIONAL ADOPTIONS

- LENGTH OF TIME IT TAKES TO IDENTIFY OR DESIGNATE THE CASE AS AN ADOPTION CASE,
- REQUESTING & RECEIVING THE HOME STUDY
- LANGUAGE BARRIER
- STAFF CHANGES IN BOTH COUNTRIES
- EXECUTION OF THE SUPERVISION AGREEMENT
- STEPS TO ACTUALLY PLACE
- DIFFICULTY IN MANAGING CASE BETWEEN TWO COUNTRIES
- MISCONCEPTIONS ABOUT A RELATIVES ABILITY TO KEEP A CHILD SAFE

ADDITIONAL COUNTRIES WITH REUNIFICATION & ADOPTION PLACEMENT REQUESTS

GERMANY, RUSSIA, PHILIPPINES, EL SALVADOR,
GUATEMALA, UNITED KINGDOM, NEW
ZEALAND, HONDURAS, IRAQ, CANADA,
SWITZERLAND, JAPAN, CAMBODIA, AUSTRALIA,
BAHRAIN, W. AFRICA, U.S. TERRITORIES OF
MARIANA ISLANDS AND GUAM

HOW CAN CRB HELP?

- BE MINDFUL OF MISCONCEPTIONS, IE VIOLENCE, POVERTY, OR THAT THE CHILD WON'T BE SUCCESSFUL BY LIVING IN ANOTHER COUNTRY
- BE WILLING TO SUPPORT AN EXTENSION OF THE ASFA TIMELINES IF A PARENT IS ENGAGED, OR IS MAKING EFFORTS TO HAVE CHILD REUNIFIED
- MAKE SURE INTERPRETERS ARE AVAILABLE DURING CRB
- ADVOCATE FOR HIRING OF BILINGUAL ATTORNEY'S
- ADVOCATE FOR BILINGUAL WORKER TO BE ASSIGNED
- SUPPORT FAMILY & CULTURAL PRESERVATION AS MUCH AS POSSIBLE
– CHILDREN CAN ATTACH TO RELATIVES
- ADVOCATE FOR PLACEMENT IN A CULTURALLY APPROPRIATE HOME

ADOPTION PICTURES



REPATRIATION



REPATRIATION

- DEFINITION: TO SEND AN INDIVIDUAL BACK TO HIS OR HER COUNTRY OF BIRTH, THE COUNTRY OF WHICH HE OR SHE IS A CITIZEN, OR THE COUNTRY FROM WHICH HE OR SHE ARRIVED.
- U.S. DOES HAVE A STRUCTURE TO REPATRIATE U.S. CITIZENS FROM AROUND THE WORLD. IN OREGON, OEMS COORDINATES THESE EFFORTS WITH CONSULATE OFFICES AND CHILD WELFARE OFFICES IF NECESSARY

ADDITIONAL WORK INVOLVING ALL COUNTRIES

- ABSENT PARENT/RELATIVE SEARCH
- REQUEST FOR CERTIFICATES OF BIRTH/DEATH
- PATERNITY TESTING
- OUT OF COUNTRY TRAVEL
- CHILD ABDUCTION
- PASSPORTS
- SPECIAL IMMIGRANT JUVENILE STATUS
- MANAGEMENT OF CASES INVOLVING REFUGEE FAMILIES/POLICY

DHS works in collaboration with Consulates & Other Countries

RESOURCES

- ANGELICA QUINTERO (503) 947-5102,
ANGELICA.QUINTERO@STATE.OR.US
- DAVID MATZ (503) 910- 6565,
DAVID.MATZ@STATE.OR.US
- KATHY PROUTY (503) 947-5358,
KATHY.PROUTY@STATE.OR.US

DEPARTMENT OF HUMAN SERVICES

WWW.OREGON.GOV/DHS

**SAFETY, HEALTH AND INDEPENDENCE
FOR ALL OREGONIANS**

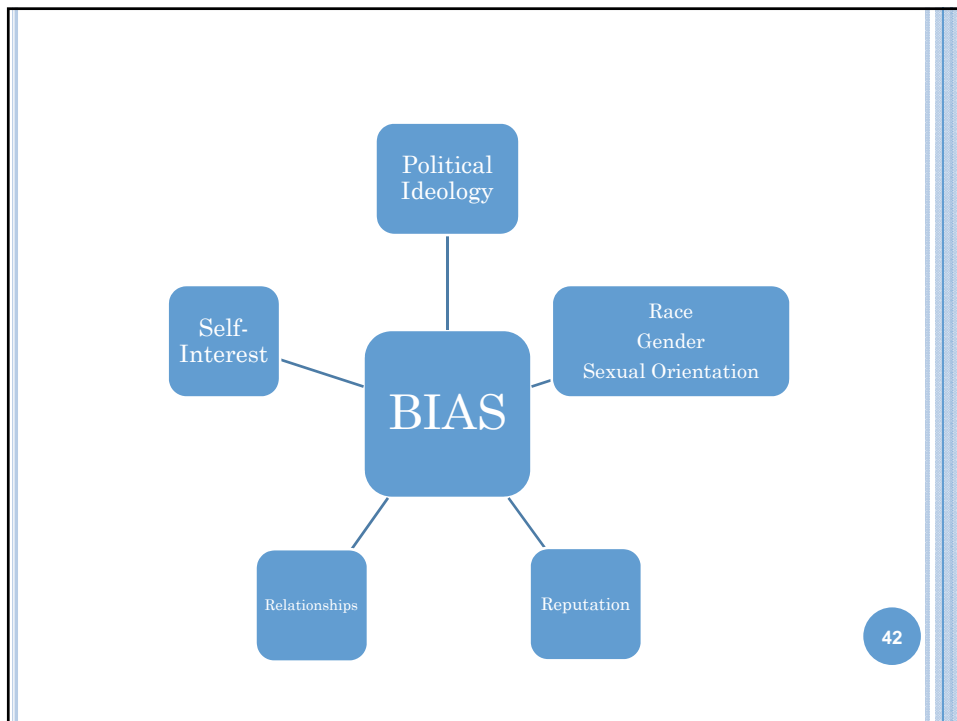
GRACIAS !!

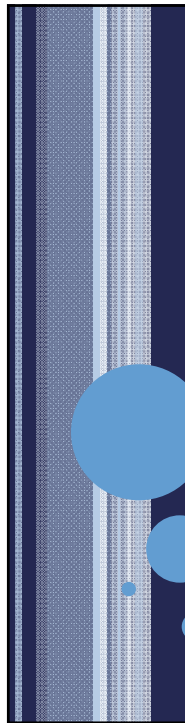


**UNDERSTANDING EXPLICIT AND
IMPLICIT BIAS**

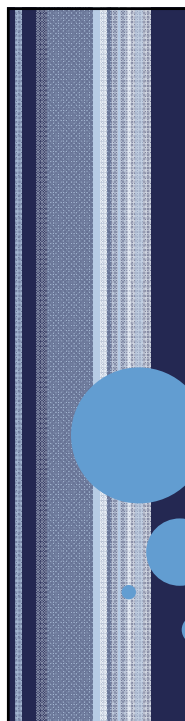
2016 Every Day Counts...
Pamela Abernethy, Senior Judge

EXPLICIT BIAS





IMPLICIT BIAS

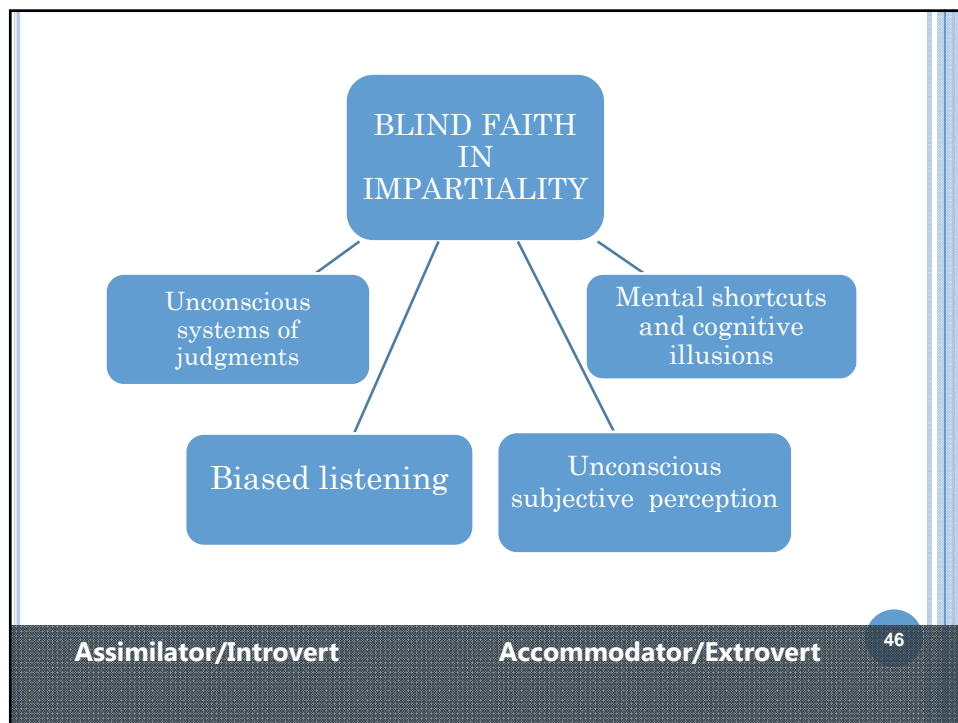


**“WE MAY TRY TO SEE
THINGS AS OBJECTIVELY
AS WE PLEASE.
NEVERTHELESS WE CAN
NEVER SEE THEM WITH
ANY EYES EXCEPT
OUR OWN.”**

Benjamin Cardozo

COGNITIVE SCIENCE CONFIRMS

- Assuming impartiality is dangerous
- Objectivity is a myth
- Perceptions are highly susceptible to error.



FACTORS AFFECTING CRB'S?

- **Findings of fact:** Unconsciously biased perception
- **Time**
- **Isolation**
- **Volume**

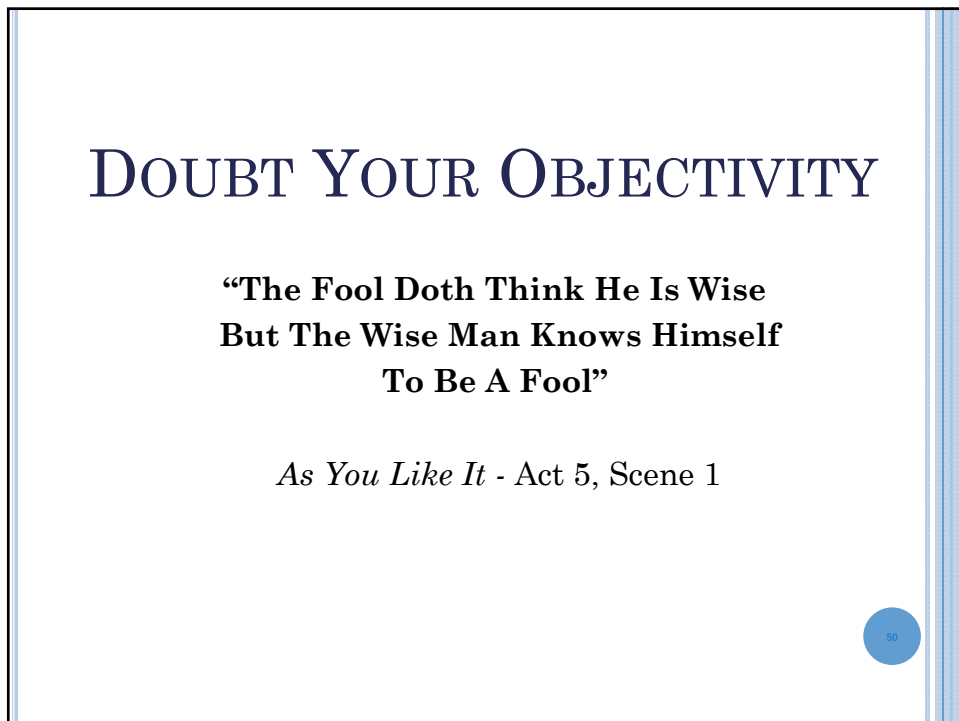
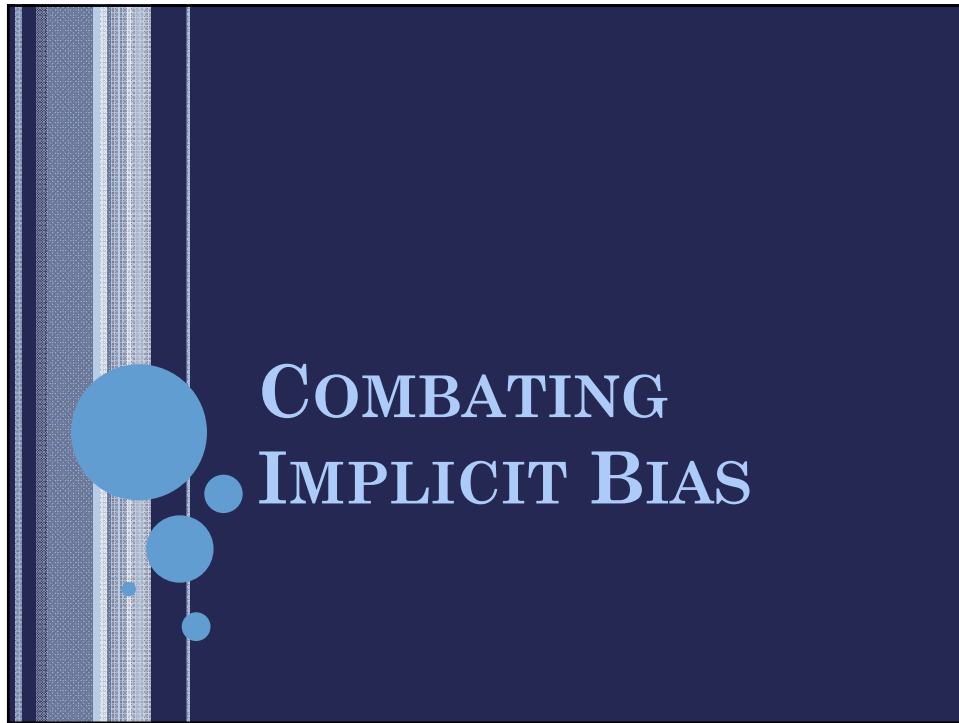


WHEN INTUITION WORKS: EXPERT PATTERN RECOGNITION



Malcolm Gladwell
*Blink: The Power of
Thinking Without
Thinking*

Little Brown and
Company, 2005.



COMBATING BIAS: LISTENING SKILLS

- Listen with an *unrebutting mind*.
- Defer judgment as you take more facts and ideas into consideration, viewing all decisions as tentative.
- Establish a system of note taking

COMBATING BIAS: TAKE A BREAK

Executive function can be restored and mental fatigue overcome, in part, by interventions such as viewing scenes of nature, short rest experiencing positive mood and increasing glucose levels in the body.

Danziger, Levav, and Avnaim-Pesso, *Extraneous Factors in Judicial Decisions*, (2010).

COMBATING BIAS: FOLLOW THE RULES AND JUSTIFY THE DECISION

- Make the findings
- Justify the decision in writing
 - To yourself and the panel
 - To the court

