



May 2025 Issue

- *Message from the TCA*
- *Visiting the New Courthouse*
- *Wayfinding Information*
- *Courtroom Technology*
- *Art Installations*
- *New Items of Note*
- *Welcome to the Neighborhood*



Message from the Trial Court Administrator

Debbie Spradley

After more than 85 years of service to the public, we are preparing to close the doors of the historic Clackamas County Courthouse in downtown Oregon City. The current courthouse has been a central part of the County's justice system for generations—witnessing decades of legal milestones and public service. As we transition to our new facility, we carry that legacy forward with deep respect for our past and strong purpose for the future.

We officially open our new courthouse at 1000 Courthouse Rd in Oregon City this May. We'll mark this historic milestone with a Grand Opening Celebration on Saturday, May 3rd, and begin operations in the new building on Monday, May 19th.

We are proud to bring meaningful pieces of our history with us. Two remarkable artifacts from past courthouses—the redwood Lady Justice statue and the ornate MacNeale & Urban vault door from the 1884 courthouse—will be prominently displayed on the first floor of the new building. Both have endured fires, storms, relocations, and decades in storage. Their presence in the new courthouse represents our continued commitment to honoring the past while embracing the future. These artifacts remind us that justice lives not only in systems and structures, but also in stories of resilience and continuity.



This is more than just a move—it is an opportunity to improve how we serve the people of Clackamas County. The new courthouse represents years of thoughtful planning, design, and collaboration. Since 2017, I’ve had the privilege of helping lead the court’s involvement in this once-in-a-generation project. Our vision was clear from the start: to create a courthouse that improves access to justice, reflects the dignity of the people we serve, operates efficiently, supports service delivery for decades to come, and can adapt to future needs over a 100-year lifespan.

The building incorporates design features that support a more trauma-informed and accessible environment. These include abundant natural light, intuitive wayfinding signage, quiet waiting areas, and dedicated spaces for private conversations—all contributing to a more respectful and user-friendly experience.

One of the most visible expressions of this commitment is our new Public Service Center, located just off the public lobby on the first floor. This space reflects a shift toward a more accessible, supportive, and efficient experience for the public. It includes three check-in kiosks to streamline arrival, tables where visitors can sit or stand to complete paperwork, and stations to privately view court records. This layout allows staff to assist visitors more privately and efficiently, reducing wait times and improving overall experience. It’s a calmer, more thoughtful environment—one of many important enhancements throughout the building.

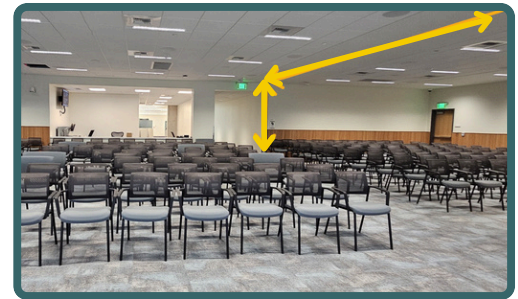


Another area of focus was improving the experience of our jurors. Located on the second floor at the top of the ceremonial stairs, the new Jury Assembly Room replaces our current off-site setup—which has long been inefficient and a source of delays. The new space provides a centralized, welcoming, and fully equipped environment where jurors can check in, receive orientation, and wait comfortably before being assigned to a courtroom.



Justice has a New Address

The jury assembly room includes seating for 225 people (expandable by 40), a flexible layout for dual orientations, and a location set apart from high-traffic areas to minimize distractions. Jurors will have access to a break room with refreshments, private lockers, juror-only restrooms, and a calm space with comfortable seating for reading or working. Upgraded technology enhances both orientation and communication. This space honors the vital role of jury service and was designed to provide a more comfortable and respectful experience for all who serve.



Yellow arrows illustrate where there is a room divider, to allow for dual orientations.

Inside our courtrooms, we've introduced modern AV and technology to support both in-person and virtual proceedings. Jurors can view digital evidence on individual displays, assisted listening devices are available throughout, and each courtroom includes tools for annotation, real-time display sharing, and seamless video conferencing—whether for hybrid hearings or remote testimony.

We've also created a variety of private meeting spaces to support confidential conversations and preparation for court. Each courtroom floor includes several conference rooms located just outside the courtrooms, as well as a larger public-facing conference room that can be used by attorneys meeting with clients or by self-represented parties who need a quiet space to organize documents or consult with support persons. For matters involving in-custody defendants, each floor also features secure interview rooms that allow for safe, private discussions. Additionally, comfortable waiting areas with views of Mount Hood offer a calming place for parties and visitors to wait before entering court.



3rd Floor - View of Mt Hood



To further support access and navigation, we've implemented a comprehensive docket display and wayfinding system. A large display on the first floor near security and the public elevators shows the day's schedule and allows visitors to look up their case information if it's not listed. Additional displays are located on each courtroom floor—limited to that floor's dockets—and directly outside each courtroom to show the matters being heard in that room. These features were designed to reduce confusion, respect privacy, and help everyone navigate the courthouse with confidence.



The new courthouse also brings together justice system partners under one roof, including the Clackamas County District Attorney's Office, Sheriff's Office, and Law Library, as well as co-located state agencies such as the Oregon Department of Human Services (ODHS) and the Oregon Public Defense Commission (OPDC). This co-location model enhances collaboration, simplifies service delivery, and improves the overall experience for the public.

We know that transitions come with questions. If you or your organization need more information or support during this time, please don't hesitate to reach out to me directly. We are committed to making this transition as smooth and successful as possible for everyone involved.

Thank you for being part of this historic moment. We look forward to welcoming you into the new courthouse.

Visiting the New Courthouse

The new courthouse is six floors high and was built to offer a safe and secure place to seek justice. The new, energy-efficient courthouse is designed to provide significantly more room and security for courthouse staff and visitors, and to serve the community for many decades to come. According to Jon Kindrachuk, PCL design-build project manager, "this isn't just a building; it's a beacon of progress for this community. More than a judicial space, this building will serve as a vibrant community hub where residents can access an array of critical services."

Visitors to the courthouse will be welcomed by a bright entrance that leads to the security area, where they will be screened before entering the building to ensure everyone's safety.

After passing through security, there is a lobby area filled with natural light, that welcomes people with a large, clear wayfinding sign, as well as digital monitors that display the court dockets (*shown above*), and an information desk (*which will not be staffed initially but may be staffed in the near future*). The first-floor elevator bay is visible as you enter the courthouse, and to the left are the captivating ceremonial stairs.





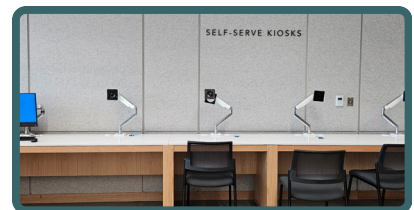
Wayfinding Information

Floor 1

As visitors enter the courthouse, the first-floor wayfinding sign provides guidance for them to find services that are available on the first floor. As they walk past the iconic Lady Justice statue and toward the grand stairway, they'll arrive at the entrance to the Public Service Center.



The Public Service Center was designed to offer a calm, customer-centered experience. Visitors can check in using self-service kiosks, receive assistance at a staffed help desk, and access public records viewing stations. Computers are available to help people complete court forms electronically using the Guide & File system. The space also includes tables where individuals can sit or stand to complete paperwork, along with a spacious, comfortable seating area so visitors can wait to be called—rather than standing in line.

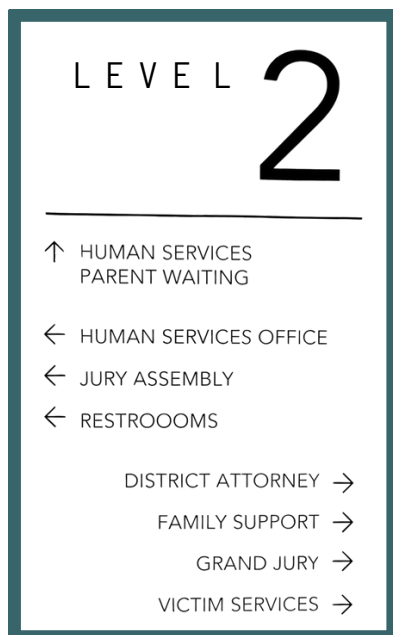




The Family Law Facilitator's Office is centrally located within the center to assist self-represented litigants. Nearby, the Clackamas County Sheriff's Office has two customer service windows to assist with civil process, handgun licenses, and other services. Also located on the first floor are the Clackamas County Law Library and the Oregon Public Defense Commission, both of which provide vital resources to court users and legal professionals.



Floor 2

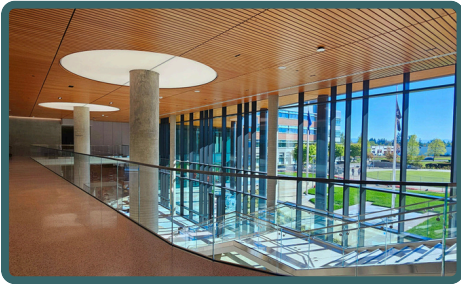


The second-floor wayfinding sign provides guidance for visitors to find services that are available on the second floor. When visitors walk up the stairway, they will see the entrance to the Jury Assembly check-in. Also on this floor are the Clackamas County District Attorney's office and the Oregon Department of Human Services office.





Across from the Jury Assembly entrance, they have a view of the breathtaking, bright lobby area and entrance windows that look out to the grassy campus area. When visitors enter the Jury Assembly area, there is a check-in window, and to the left they can make their way into the jury assembly room. Just around the corner from the jury assembly room (*indicated by yellow arrow*), jurors will enjoy a lobby with comfortable seating for reading or working, private lockers, a break room with refreshments, and juror-dedicated restrooms.



Floors 3, 4, 5, 6

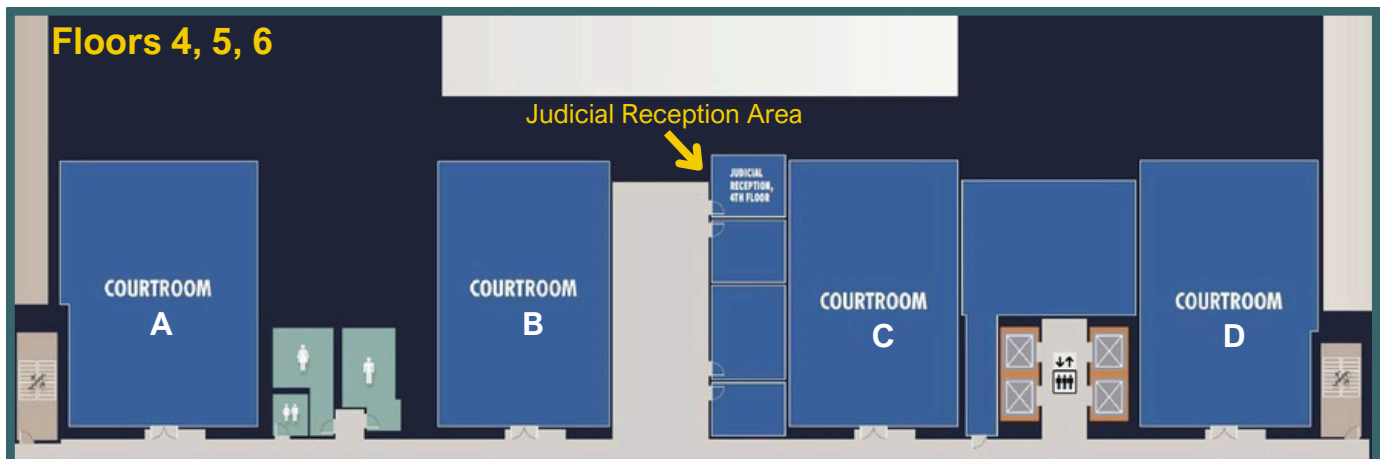
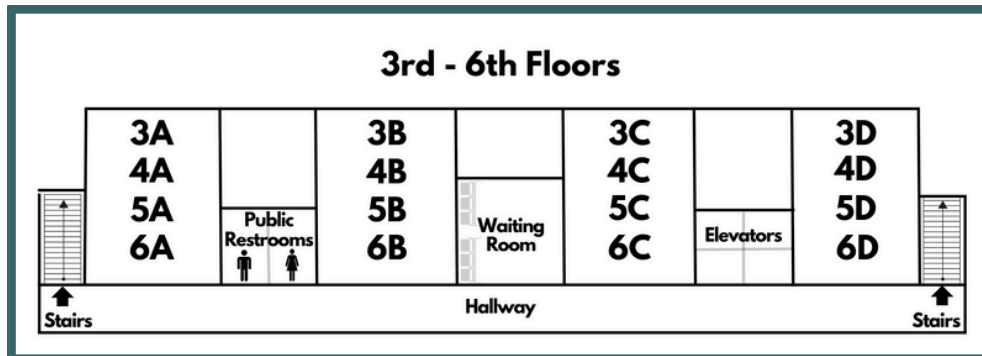
The wayfinding signs on each courtroom floor provide guidance for visitors to find courtrooms or other offices that are available on the third, fourth, fifth, and sixth floors.

<div>LEVEL 3</div> <div><div>← COURTROOM 3A</div><div>← COURTROOM 3B</div><div>← COURTROOM 3C</div><div>← COURTROOM WAITING</div><div>← RESTROOMS</div></div> <div><div>COURTROOM 3D →</div><div>ELEVATORS →</div><div>JUDICIAL RECEPTION →</div></div>	<div>LEVEL 4</div> <div><div>← COURTROOM 4A</div><div>← COURTROOM 4B</div><div>← CONFERENCE 4C</div><div>← COURTROOM WAITING Judicial Reception</div><div>← RESTROOMS</div></div> <div><div>CONFERENCE 4D →</div><div>ELEVATORS →</div></div>	<div>LEVEL 5</div> <div><div>← COURTROOM 5A</div><div>← COURTROOM 5B</div><div>← COURTROOM 5C</div><div>← COURTROOM WAITING Judicial Reception</div><div>← RESTROOMS</div></div> <div><div>COURTROOM 5D →</div><div>ELEVATORS →</div></div>	<div>LEVEL 6</div> <div><div>← COURTROOM 6A</div><div>← COURTROOM 6B</div><div>← COURTROOM 6C</div><div>← COURTROOM WAITING Judicial Reception</div><div>← RESTROOMS</div></div> <div><div>COURTROOM 6D →</div><div>ELEVATORS →</div></div>
---	---	---	---



The courtroom floors have similar layouts (see below). There are judicial reception areas centrally located on the 4th, 5th, and 6th floors. On the 3rd floor, the judicial reception area is located on the north end of the building (left as you exit the elevator).

Judicial Reception Rooms are located on each courtroom floor to provide a secure way for visitors to reach judges and their staff. Visitors use a video intercom inside the reception room to request access, and if approved, will be allowed into the judicial area. This system helps maintain security while supporting timely communication.





All of these floors have courtroom waiting areas that are similar and clearly marked. From the waiting areas, visitors can also access private rooms for confidential meetings or conversations, and attorney-client meeting rooms. There are docket displays outside of each courtroom.



Clearly marked courtroom waiting areas on each courtroom floor



3rd floor waiting area & adjacent private meeting rooms



4th, 5th, 6th floors waiting area & adjacent meeting rooms



Courtroom Docket Display outside each courtroom

Each courtroom floor contains four courtroom spaces. While most floors are fully operational with four active courtrooms, the fourth floor currently includes two large conference rooms that are reserved for future courtroom buildout.

Third Floor (4 courtrooms total):

- 1 high-volume courtroom
- 1 standard courtroom
- 2 juvenile/flexible courtrooms

Fourth Floor (2 courtrooms + 2 warm-shelled spaces):

- 1 high-volume courtroom
- 1 standard courtroom
- 2 large conference rooms
(reserved for future courtroom buildout)

Fifth Floor (4 courtrooms total):

- 1 high-volume courtroom
- 3 standard courtrooms

Sixth Floor (4 courtrooms total):

- 1 high-volume courtroom
- 3 standard courtrooms



High-volume Courtroom



Standard Courtroom



Courtroom Technology

All courtrooms in the new courthouse are equipped with the same modern technology and capabilities, scaled appropriately to fit the size and layout of each space. Courtrooms with jury boxes include additional juror display monitors, while smaller courtrooms are designed to efficiently support non-jury proceedings.

Key features available in every courtroom include:

- Digital evidence presentation systems, including individual displays for jurors (where jury boxes are present)
- Real-time annotation and display sharing tools for presenting exhibits and evidence
- Hybrid hearing capabilities to support both in-person and remote participants
- Upgraded video conferencing for remote testimony and virtual proceedings
- Assisted listening devices to enhance accessibility for all participants
- Large public docket displays outside each courtroom for clear case information

These upgrades were designed to create a more efficient, accessible, and adaptable court environment for all users. See below for more details.

Annotation Displays

- Annotations screens located at:
 - Witness stand
 - Counsel tables
 - Mobile lectern
- Annotations screens allow the user to draw/annotate on presented material and share what they are drawing in real time on the other screens in the courtroom. The intended use is to allow counsel & witnesses to be able to elaborate or clarify ideas while presenting.
- Each annotation screen draws in a different color, so it is clear who is annotating what.
- All annotations are saved and can be accessed by OJD techs and provided to the courtroom clerks upon request.
- Annotation screens also view the same media that is shown on the jury, judge, and 85-inch displays.

85 Inch TV

- One 85-inch TV which displays digital evidence, annotations, and video conference calls.

Assisted Listening Devices

- Several assisted listening devices available in each courtroom that allow those who are hard of hearing to listen to the room audio via a headset.

Judge Display

- Judge's bench is equipped with video display that shows the same media as the jury box displays and the 85-inch TV.



Jury Box Displays

- Four 22-inch displays located in each of the two rows of the jury box (total of eight displays) that allow jurors to view the same media that is put on the 85-inch TV.
 - This includes digital evidence, annotations, and video conference calls, which makes it easier for the jury to see everything being presented more clearly.
-

Judge Side Bar Mic System

- Judge's bench has a side bar microphone so side bar conversations can be captured on the record, if the judge desires.
 - During a side bar conversation, room sound reinforcement is turned off and white noise is pushed to all room speakers so the side bar conversation cannot be heard by jurors or other people in the courtroom. This helps reduce the need to move jurors out of the room during these conversations, thus saving time.
-

Mobile Lectern

- Mobile lectern hook-up
- One lectern available at a time on each courtroom floor — advance reservations encouraged whenever possible.
- Lectern features:
 - Height adjustable- similar to a sit/stand desk
 - BlueRay/DVD player.
 - HDMI input connection to the room, judge, and jury displays as well as video conferencing
 - Microphone.
 - ELMO system— capture printed or physical evidence via video and shared on the room/jury displays as well as video conferencing.

Video Conferencing Capabilities

- Capture video of two locations in the courtroom at once. Clerks can switch the focus points quickly by utilizing different saved camera focus locations.
 - Share media from each counsel table (via HDMI) while maintaining the conference connection to remote users, allowing courtroom presenters to be heard while showing evidence to remote participants.
 - Allow H.323 connections (enables older video conferencing systems to connect to the room AV system), as well as the ability to connect to Webex, TEAMS and Zoom meetings (Webex is the court standard).
-

Wireless Microphones

- Two available wireless microphones that can each be clipped on the collar of a speaker to allow for mobility around the courtroom and be heard on video conference calls, room sound reinforcement and the official record.
-



Art Installations

1st Floor - Lady Justice



10-Ft Redwood statue from the 1884 Courthouse

Lady Justice has long symbolized fairness, reason, and balance — and in ancient times, she did so with eyes wide open. Blindfolds were only added centuries later as social commentary, later reimagined as a symbol of impartiality.

This 10-foot redwood statue was carved in Italy and gifted to Clackamas County by Judge William L. White in 1884. He insisted she be made with clear eyes, not blindfolded — a statement that justice should see everyone clearly. Originally perched atop the courthouse, she weathered the elements for 50 years before being retired and stored.

Decades later, she was restored by the Clackamas County Historical Society and returned to the courthouse in 2007. While her original scales and sword were lost to time, her gaze — and message — remain as strong as ever.

1st / 3rd / 5th Floor Elevator Bays

Artist: Mike Suri (Portland, OR)

Mike is a self-taught artist whose practice centers on sculpture. Over the past three decades, Suri has refined his craft by mastering industrial processes and equipment used to manipulate metals such as steel, stainless steel, copper, bronze, and aluminum.

130in x 130in x 1in

Dark Grey Patina on Aluminum
Aluminum and Patina Slab is a cast aluminum sculpture comprised of 115 individually sculpted and cast pieces.



Meditation I
3rd Floor



Meditation II
1st Floor



Meditation III
5th Floor



2nd / 4th / 6th Floor Elevator Bays

Artist: Bobby Mercier (Grand Ronde, Oregon)

Bobby is one of 10 Chinookan carvers who truly understand and practice traditional carving. Being a member of the Confederated Tribes of the Grand Ronde, the art focuses on the actual traditional art of Clackamas.

30x40 x4

20x60 x2

2 canvases per floor
Prints of the original carvings.



TYEE (Chief) - 2nd Floor



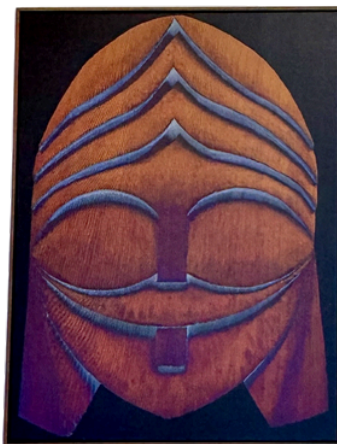
Nobel Man - 2nd Floor



*TYEE (Chief)
4th Floor*



*Reflections
4th Floor*



Nobel Women - 6th Floor



One Mind - 6th Floor



Justice has a New Address

1st / 2nd Floor Wall Panels

Artist: Shari Erickson (Beavercreek, Oregon)

Shari Erickson paints the landscape and nature of her beloved rainy, misty, mossy Pacific Northwest, USA, in acrylic, watercolor and mixed media. She lives in rural Oregon surrounded by forests and fields and lots of wildlife.

Acrylic Wall Panel – Watershed

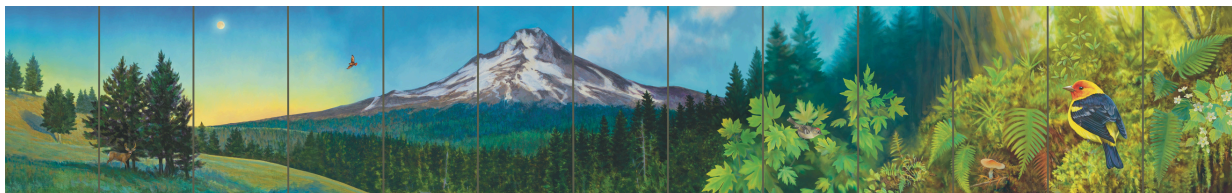
The watershed of Clackamas County. Countless trickles become shaded creeks, become white water streams, become our Wild and Scenic Clackamas River.



Watershed - 1st Floor

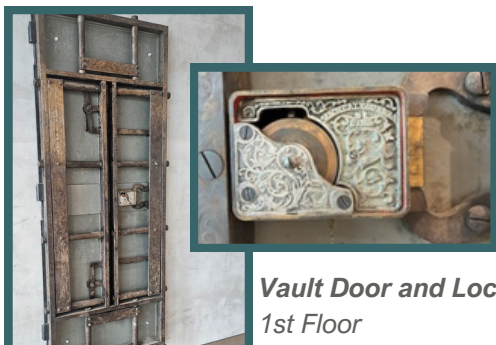
Acrylic Wall Panel – Volcano to Prairie

Beautiful Clackamas County! From the western face of majestic Mt. Hood, standing sentinel over the lush temperate rainforest, to the rich plains and rolling hills of the Willamette Valley.



Volcano to Prairie - 2nd Floor

1st Floor Vault Door



*Vault Door and Lock
1st Floor*

Cast iron and virgin steel, 1,000-pound vault door, built by the MacNeale & Urban Co., from Clackamas County's 1884 courthouse

After surviving multiple courthouse transitions — and even decades of obscurity in a back hallway, this ornate door is now installed in our fifth courthouse — a threshold through time, and a reminder of justice's enduring role in protecting what matters most.



New Items of Note

- Most forms previously found in the courtrooms will be kept in centralized locations outside of the courtrooms to minimize interruptions and distractions in court. These forms will be available in the Attorney-Client Conference Rooms, located within the public waiting areas on each courtroom floor, to ensure convenient access for anyone who may need them.
- To ensure a smooth transition to our new building and maintain building security, some access procedures will be changing. Attorneys and others without courthouse workspace will enter through public screening, as badge access will not be provided.
- In the new courthouse, judges will not be permanently assigned to a specific courtroom. Instead, courtroom assignments may vary daily to make the most efficient use of spaces based on case needs. With a mix of courtroom sizes—including two without jury boxes—this flexible system allows the court to better match hearings and trials to the appropriate setting, supporting faster scheduling and more effective use of judicial resources.

To assist visitors, docket displays are located at the main entrance, outside each courtroom floor, and at each courtroom door to help guide court patrons to the correct location.

Welcome to the Neighborhood

The court has put together a resource list of the businesses in neighborhood, near the new courthouse, including address, distance from courthouse, and phone number. These resources include the following:

- Grocery Stores
- Restaurants
- Parks
- Coffee Shops
- Banks/Credit Unions
- Pharmacies
- Post Office
- Gyms

Please find your courtesy copy attached to this newsletter.



Our new address:

Clackamas County Circuit Court
1000 Courthouse Rd
Oregon City, OR 97045