



Oregon Judicial Department Administrative Structure

Updated: January 2024

Three branches of government



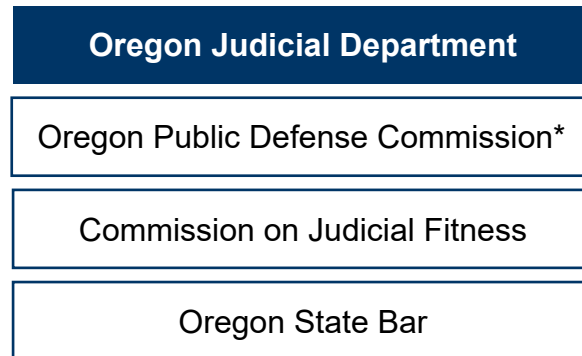
Legislative Branch



Judicial Branch

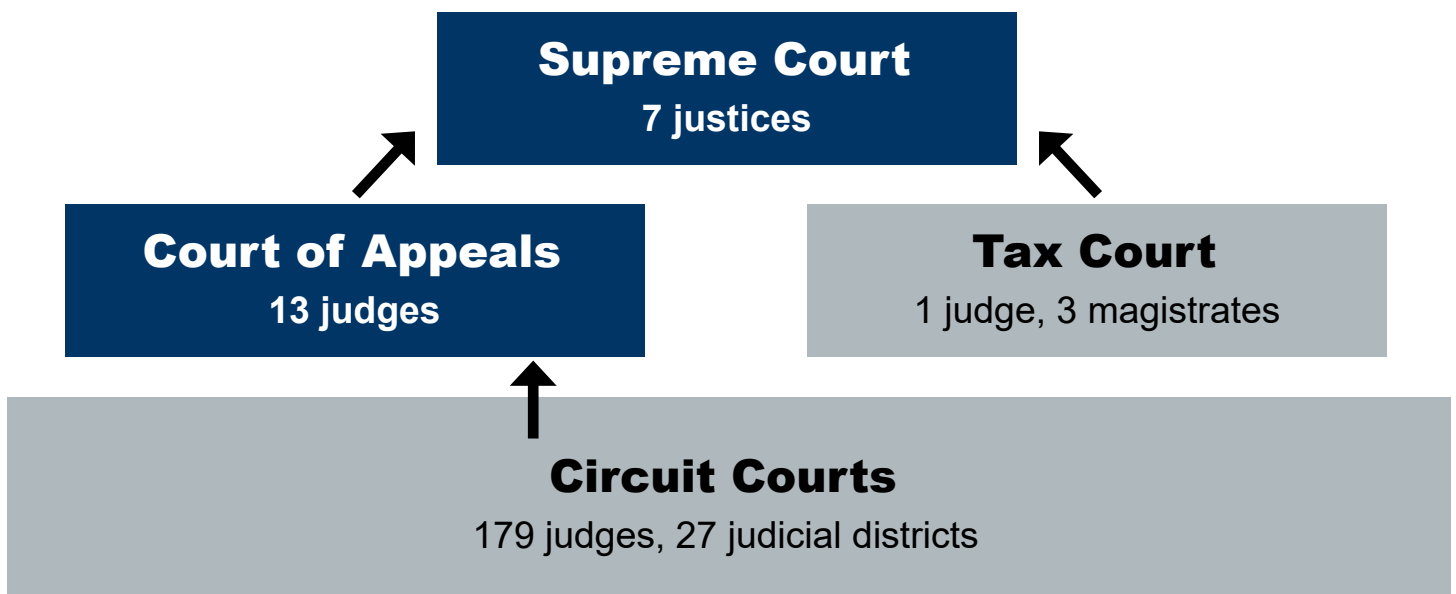


Executive Branch



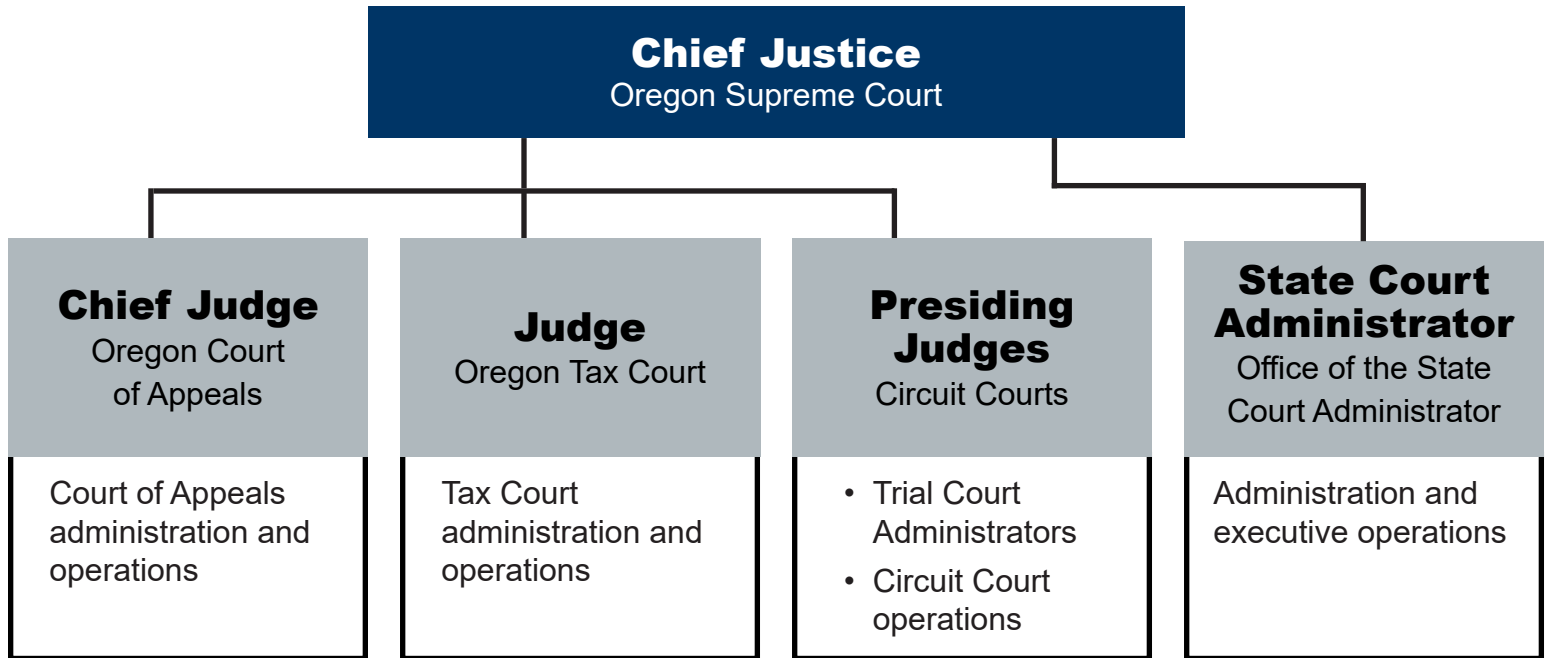
*Moving to Executive Branch in January 2025

Oregon's state courts



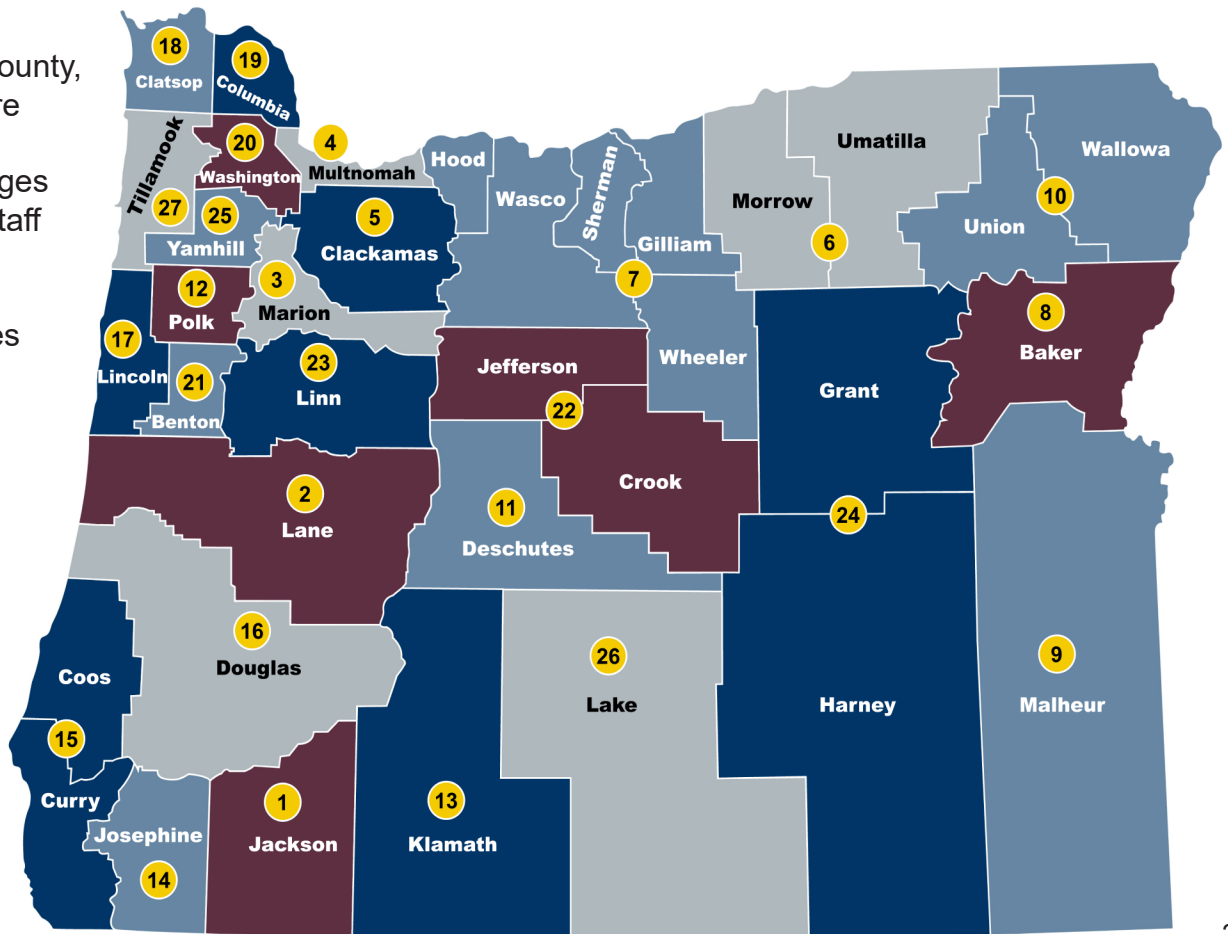
Oregon Judicial Department | Administrative Structure

Court leadership



Oregon's state courts

- 27 judicial districts: some contain one county, and some have more than one
- 179 circuit court judges
- About 1,800 court staff
- Serving 4.24 million people in Oregon
- About 500,000 cases each year



Judicial district numbers

Office of the State Court Administrator (OSCA)

- Operational backbone for statewide court system
- Program support and coordination
- Strategic planning
- Governance
- Education and training
- Ensure access for all

