

Using Juvenile Data to Improve Court Practices



Presented by

Yousef Allouzi, Juvenile Data Analyst, BFS D

Jayne Cooper, Legal Policy Advisor, Juvenile & ICWA, JFCPD

Introduction



ODHS DATA

family

<https://www.oregon.gov/odhs/data/Pages/cw-data.aspx>

UNDERSTANDING

OJD DATA

DASHBOARDS

A FEW TERMS TO KNOW

MEAN (AVERAGE)

2, 4

Add $2 + 4 = 6$ and then divide by 2.

So, $2 + 4 = 6$

$6 / 2 = 3 \leftarrow$ Mean

MEDIAN (MIDDLE)

2, 4, 6

But what if the numbers are even?

2, 4, 6, 8

OR $4 + 6 = 10 / 2 = 5 \leftarrow$ Median

EVENT CODES

Odyssey interprets certain programming codes as "Event" Codes. This is a general term that often applies to a wide variety of court actions such as motions, orders, petitions, etc.

OJ D TIMELY DISPOSITION STANDARDS

TIME TO JURISDICTION ON BOTH PARENTS

- 75% with a jurisdictional or dismissal judgment(s) entered regarding all parents on the case within 60 days.
- 98% with a jurisdictional or dismissal judgment(s) entered regarding all parents on the case within 90 days.

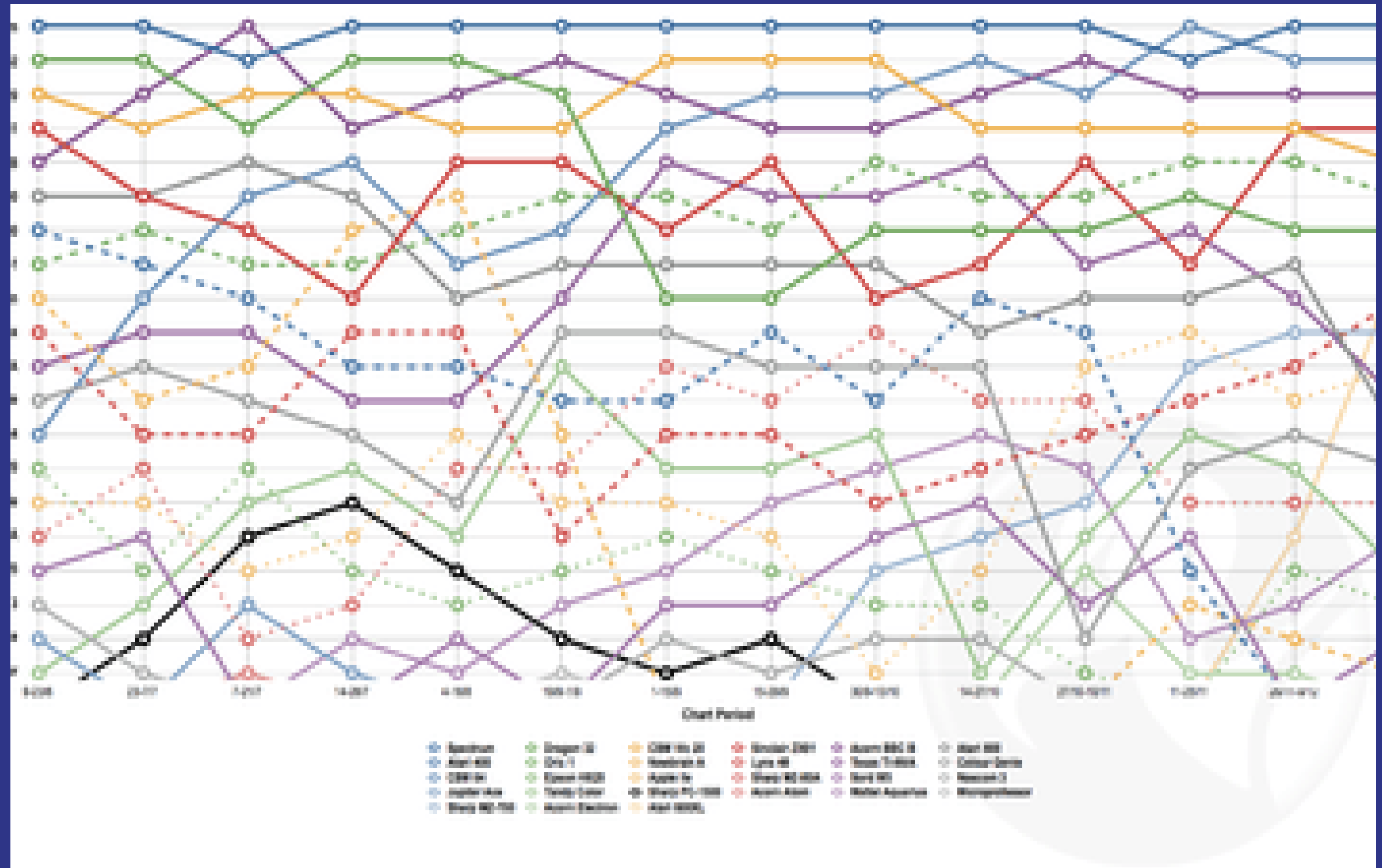
TIME TO FIRST PERMANENCY HEARING, LOOKING BACK

- 98% within 425 days (14 months) of filing

TIME TO TERMINATION OF PARENTAL RIGHT

- 98% within 270 days (9 months) of filing
-

DATA
CAN BE
FUN!



Proof that data is easy and fun!



**PRACTICE
MAKES
PERFECT**

PUT IT INTO ACTION

1. Look at the data for your district-OJD, ODHS, or both
2. Identify 2-3 data points that you think need improvement

How OJD

data is
created

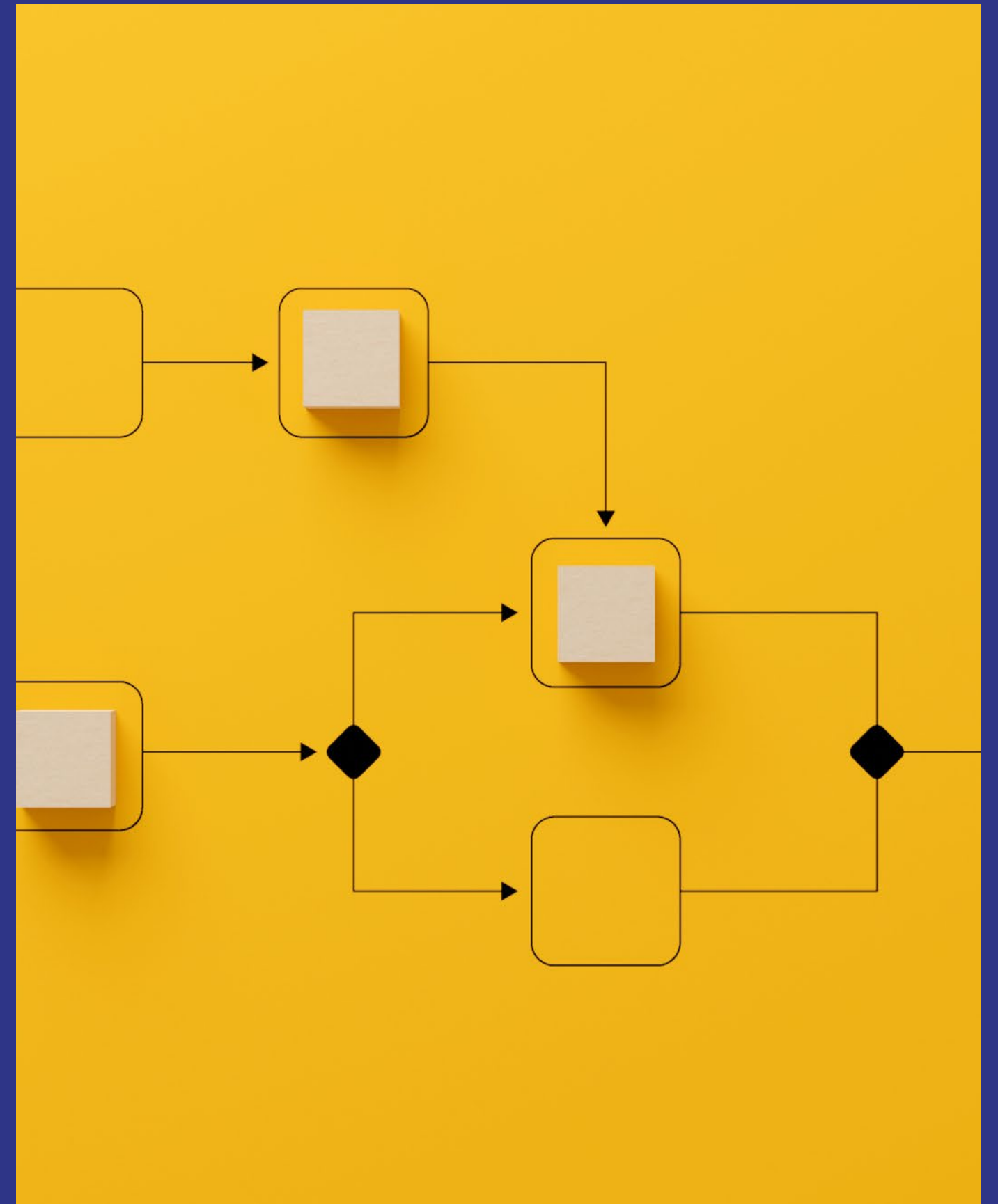


OJD Business Processes

A step-by-step guide to entering data into Odyssey

There are over 50 BPs for juvenile dependency proceedings alone.

[OJD Online Help System](#)



Support for Court Staff

Lunch & Learn
Trainings

Juvenile Staff
Discussion Board

One-on-one and
county specific help
from OSCA



Why OJD
data is
created



Le g i s l a t i o n

Federal Funding

Grants

Court Improvement
Efforts -Statewide &
Local



ORICWA Data

Measuring our Compliance with ICWA &
ORICWA-Data Dashboard

ORICWA Bi-Annual Legislative Report

Court Improvement Efforts - ICWA Courts,
Reducing Disproportionality, Training

Federal Grant to Implement Best
Practices in Indian Child Welfare

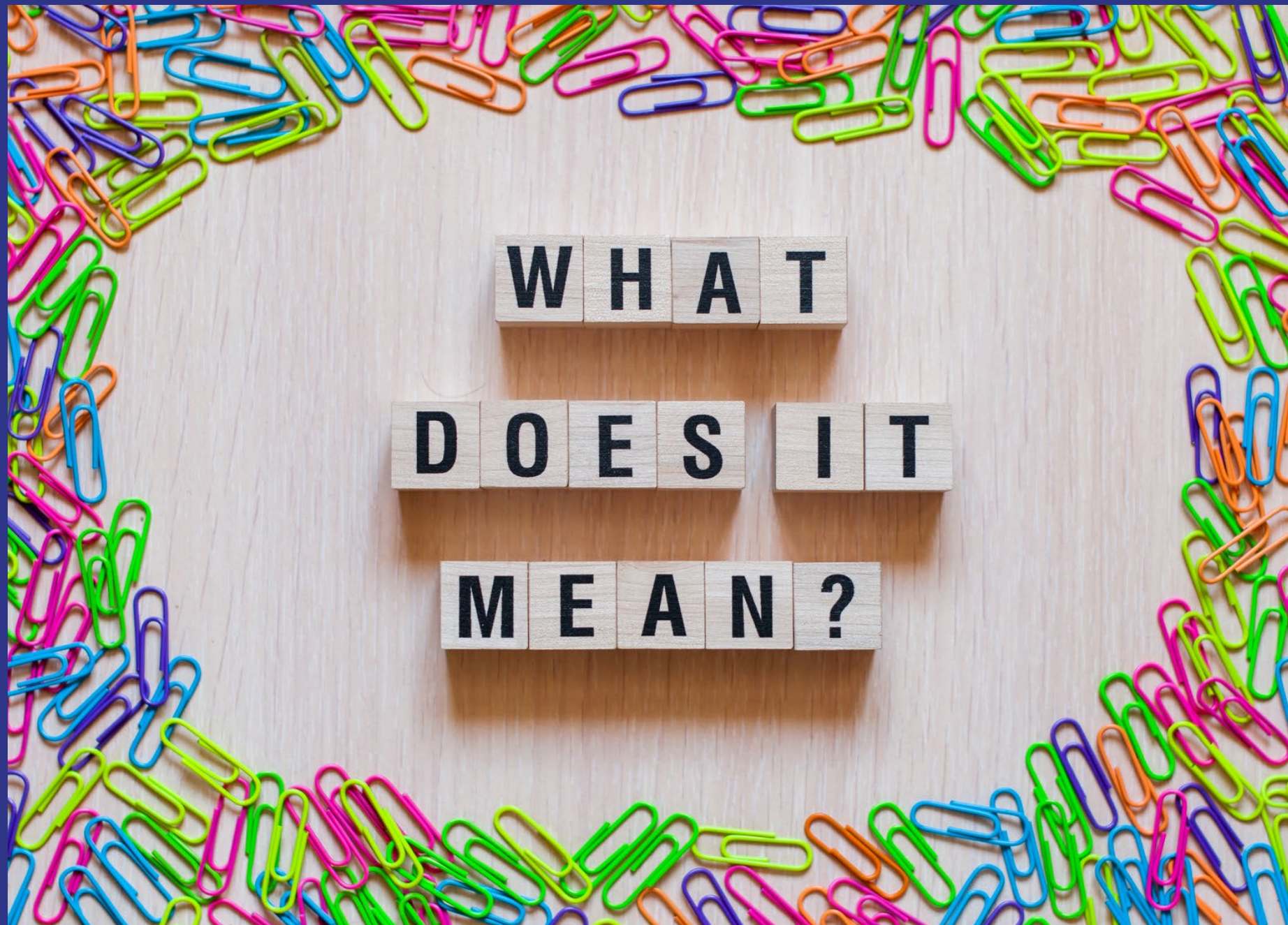


PUT IT INTO ACTION

How to use the data



Juvenile Data



Qualitative Data-A Way to Dig Deeper



Qualitative data is descriptive. It describes certain attributes and helps to understand the "why" or "how" behind certain behaviors. It is also dynamic and subjective, and open to interpretation.

Qualitative data is gathered through survey, interviews, and observation.

How JCIP Uses Data

JCIP Project
Development

Judicial Court
Attorney
Measures of
Performance
(JCAMP)

Tools for Local Court Improvement Projects

Surveys (formal or informal)

Ask team members to informally poll colleagues with questions.

Create a feedback box that will allow for anonymous responses.

Ask JCIP to put together a survey on SurveyMonkey.

Focus Groups and Interviews

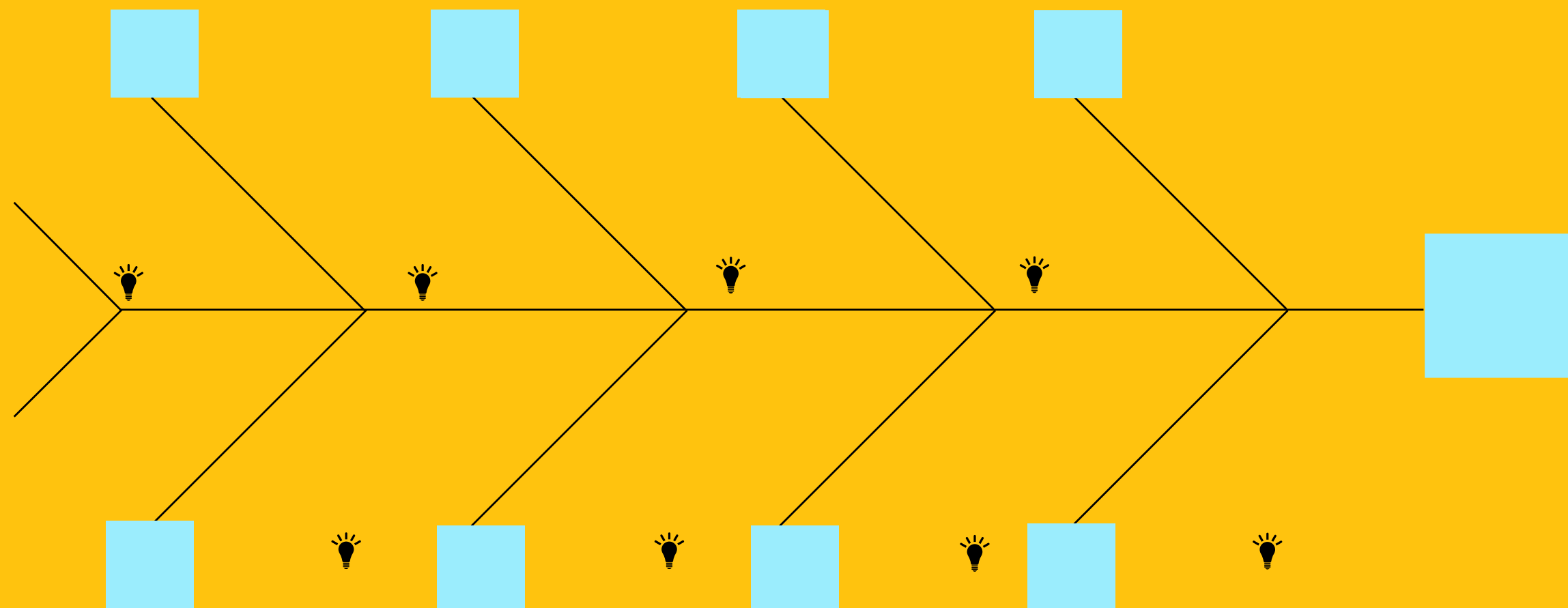
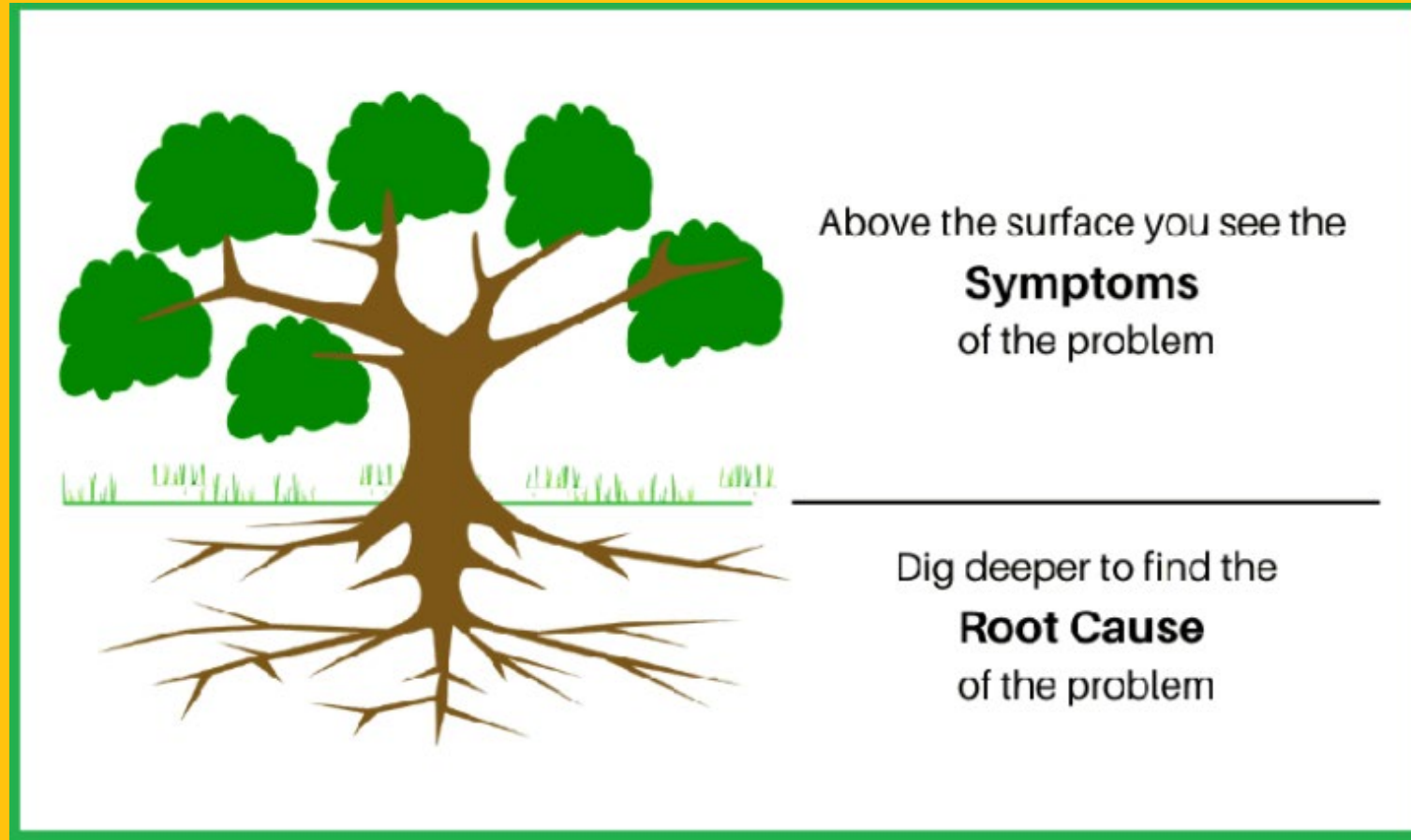
Invite a group of people to come to a meeting to give their perspective on a topic, like resource parents or caseworkers.

Interview a parent mentor to gain parent perspective. Or invite them to be a member of the model court team.

ROOT CAUSE

ANALYSIS

A Way to Identify the Underlying Causes of a Problem





**PRACTICE
MAKES
PERFECT**

PUT IT INTO ACTION

1. Look back at the data you found before.
2. What other data do you want to understand what is happening?
3. How might you gather this?

Thank you for taking the time to learn about child welfare data in Oregon and how it can be used to improve the lives of children and families in our state.

Questions?



Yousef Allouzi
Data Analyst, Juvenile
Juvenile Court Improvement Program
Oregon Judicial Department
Yousef.K.Allouzi@ojd.state.or.us

Jayne Cooper
Legal Policy Advisor, Juvenile & ICWA
Juvenile Court Improvement Program
Oregon Judicial Department
Jayne.E.Cooper@ojd.state.or.us

Where to find the data

OJD

OJD External Juvenile Data

Dashboard (non-OJD can access)

OJD Internal Juvenile Data

Dashboard (OJD can access)

OJD Online Help System

(business processes)

ODHS

<https://www.oregon.gov/odhs/data/Pages/cw-data.aspx>

ODHS Child Welfare Data Book

ODHS Child Welfare ROM Reports

ODHS Federal Performance

Measures Dashboard

Remember to bookmark these sites!